

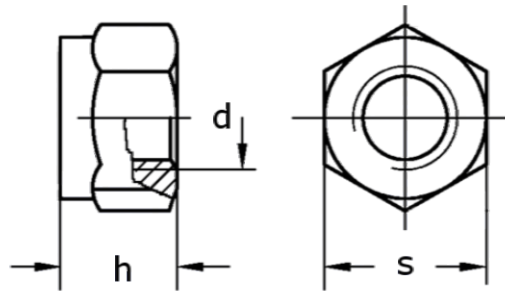


POLAR
—FASTENERS—

DIN EN ISO 7042

Benzeri - Similar - Ähnlich
DIN 6925
DIN 980

- Altıköşe Sıkmalı Somun
- Prevailing Torque Type Hexagon Nuts, all-metal Nuts
- Sechskantmuttern mit Klemmteil, Ganzmetallmuttern



d	M 5	M 6	M 8	M 10	M 12	M 14
P (pitch)	0,8	1	1,25	1,5	1,75	2
h (max)	5,1	6	8	10	12	14,1
s (max)	8	10	13	16	18	21

d	M 16	M 20	M 24	M 30	M 36
P (pitch)	2	2,5	3	3,5	4
h (max)	16,4	20,3	23,9	30	36
s (max)	24	30	36	46	55