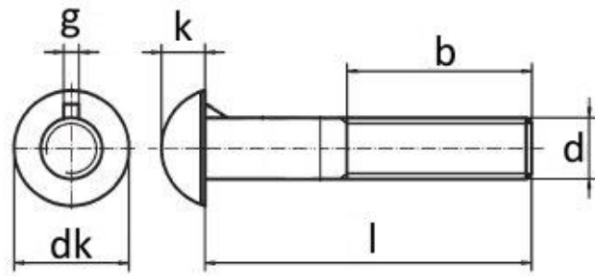




DIN 607

- Bombe Başlı Tirnaklı Civata
- Cup Head Nib Bolts
- Halbrundschauben mit Nase



d	M 8	M 10	M 12	M 16
P (pitch)	1,25	1,5	1,75	2
dk (max)	16,55	19,65	24,65	30,65
k (max)	6,38	7,45	9,65	11,75
g (max)	3	3,2	3,6	4,2
b (l ≤ 125)	22	26	30	38
b (125 < l ≤ 200)	28	32	36	44
b (l > 200)	–	–	–	57
l	16-80	25-100	30-120	30-160