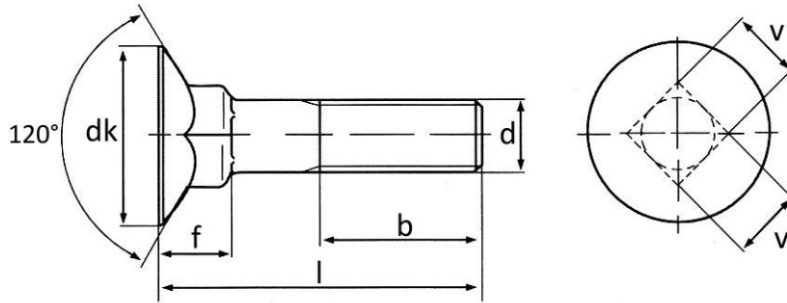




**POLAR**  
=FASTENERS=

## DIN 605

- Havşa Başlı Dibi Uzun Dörtköşe Civata
- Flat Countersunk Square Neck Bolts, Long Square
- Senkschrauben mit Hohem Vierkantansatz



d	M 6	M 8	M 10
P (pitch)	1	1,25	1,5
dk (max)	16,55	20,65	24,65
f (max)	7,45	9,45	11,55
v (max)	6,48	8,58	10,58
b (l ≤ 125)	18	22	26
b (125 < l ≤ 200)	24	28	32
b (l > 200)	–	41	45
l	30-60	30-80	40-100